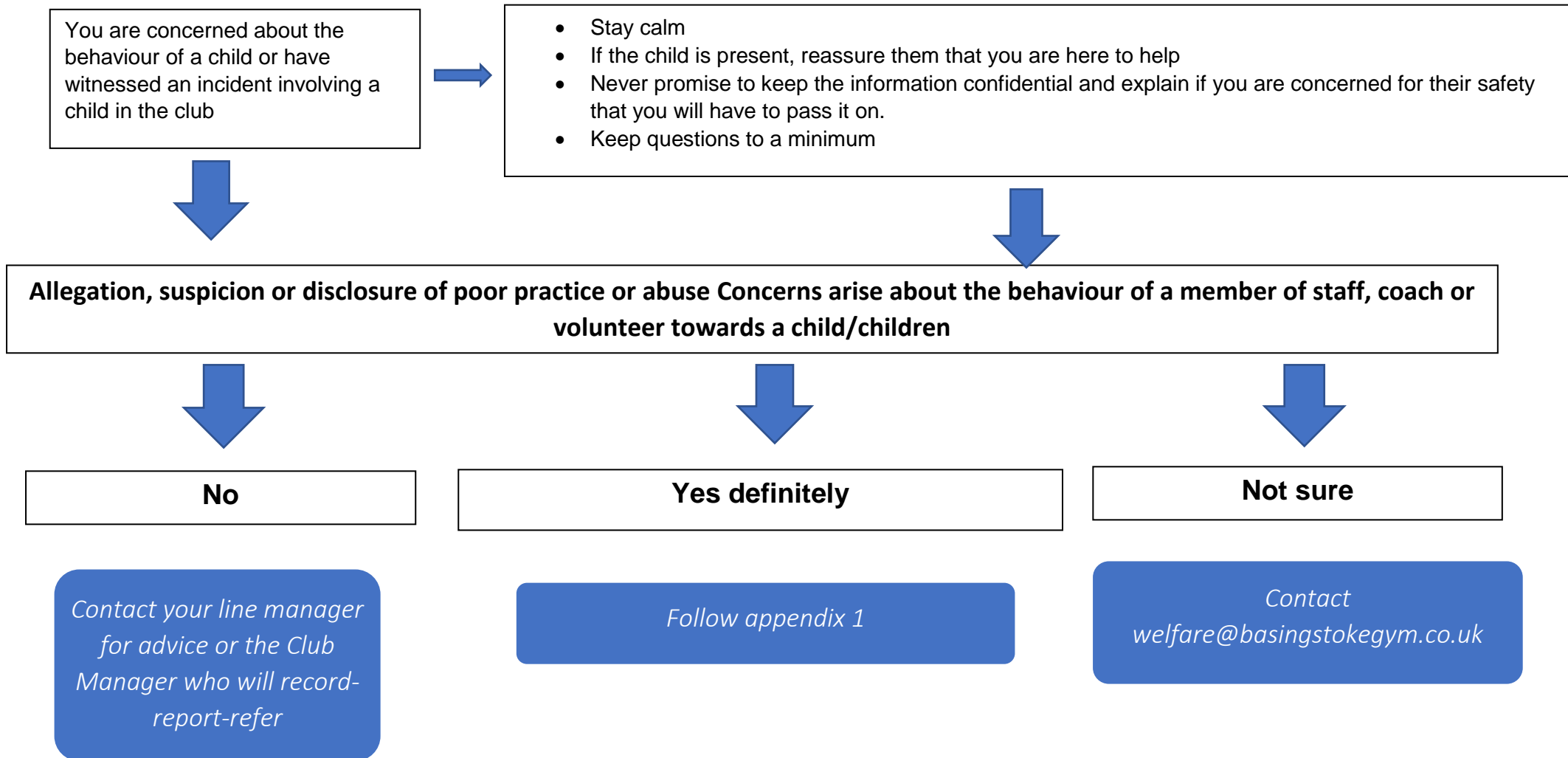


Dealing with concerns in a Gymnastics setting



Do not discuss the matter with anyone further.



Are they in need of medical attention?

Yes

No

- Telephone for an ambulance or take them to hospital.

Does the abuse involve a coach/person within the club?

No

Yes

Call Police
NSPCC helpline 0800 800 5000
Call Local Designated officer 01962 876364/child.protection@hants.gov.uk

Contact the lead welfare immediately
welfare@basingstokegym.co.uk
or call [07771532944](tel:07771532944)

The lead welfare officer may inform the necessary agencies:
Children's services
Police
British Gymnastics
NSPCC